



东莞中力仪器科技有限公司

ZhongLi Instrument Technology Co., Ltd.

# Introduction

**Name: ZL-8004B electric desktop digital tensile testing equipment**



Tel: [+86-769-3365 7986](tel:+86-769-33657986)

Website: [www.zltester.com](http://www.zltester.com)

Address: [No.62, Xinhe Management of Area, Wanjiang District, Dongguan city, Guangdong province ,China](#)

Fax: [+86-769-3365 7987](tel:+86-769-33657987)

E-mail: [Zhongli@zltester.com](mailto:Zhongli@zltester.com)



**Equipment summary:**

ZL-8004B Electric desktop tensile testing equipment is a simple type machine, simple structure, convenient operation, It can be tested on the operated table, Using the electronic control systems, load sensor is rising and falling to test the tension or compression through the motor rotation, transmission machinery and T-screws. This machine is simple to operate, especially suitable for controlling quality in production line, This series of machine is mainly applied to test the non-metallic and metallic materials which the load is less than 1KN.

**Main functions:**

This machine can be test all the material in tensile, compression, bending, shear, peel, tear, two-point extended (need add extensometer) and others for control products quality. Such as textile, rubber, plastics, synthetic leather, tape, adhesive, plastic film, composite materials, electronics, metals and other materials,

**Main feature**

1. Excellent design: my company has focused on product appearance over the years, company has developed many products that is similar with the foreign products, the surface of product is made of aluminum and process by electrostatic spray
2. digital force displayed by LCD , discernible tension or pressure, LCD display clearly
3. Three kinds of units: N,Kg ,Lb ,ton option or automatically exchange;
- 4.LCD with backlight can be used in low-light environments
5. Single measurement, it can record the max force of tension and compression in both directions, automatic or manual cleared to zero.
- 6.The system would shut down if overload or over-trip
7. Structure of single-column is beautiful and sophisticated, seating operation, relaxation and nature.

**Corresponding standard:**

《GB/T16491-1996 electronic universal testing machine》

**Applicable industry:**

It is widely used in wire and cable, hardware, electronic and electrical equipment, packaging, printing, medical equipment, auto parts, textiles and leather, clothing, shoes, rubber and plastic products, colleges and universities; research laboratories; inspection arbitration, technical supervision departments and many other industries, it is the basic equipment for quality management and physical tested

**Technical parameters:**

Model	ZL-8004B
-------	----------

Tel: [+86-769-3365 7986](tel:+86-769-33657986)

Fax: [+86-769-3365 7987](tel:+86-769-33657987)

Website: [www.zltester.com](http://www.zltester.com)

E-mail: [Zhongli@zltester.com](mailto:Zhongli@zltester.com)

Address: [No.62, Xinhe Management of Area, Wanjiang District, Dongguan city, Guangdong province ,China](#)



东莞中力仪器科技有限公司

ZhongLi Instrument Technology Co., Ltd.

Maximum load	1KN high-precision sensors from U.S.A.
Capacity choice	200N, 500N, 1KN or less than can be self-selected
Unit	KG,N,LB, TON
Measurement system	Load cell + HZ-2000
Accuracy load of measurement	the load cell + HZ-2000 screen $\pm 0.5\%$ (full range of 5% -100%)
Resolution	1 / 50000
Maximum test stroke(excluding fixtures)	About 500mm (excluding gripper, special testing space can be customized according to customer needs)
Test speed	50-300mm / min with stepless speed and 5 fixed-speed (special testing speed can also be customized according to customer needs)
Data sampling frequency	200times/sec
Machine with thermal printers can automatically output the testing results.	
Can store 10 testing results and auto-calculate its average, auto-grab maximum force and the force at break.	
Display	ZL-2000 dark blue LCD display, membrane touch keys, with the following functions.
Machine size	45x58x135cm (length*width*height)
Weight	75KG
Ratio of Breakpoint	from 0 ~ 99%, which the user can set according to different materials to stop the machine, realizing stop machine at any position.
Safety	The system would shut down if overload or over-trip.
Shape	column shell is made of aluminum material.
Power system	AC Motor
Power	120W(depending on different demand of force using different motor)
Power supply	1 $\Phi$ , 220V, 15A

- ① Single test, 10-point statistics manually and automatically calculate its average and break values;
- ②. Multi-unit automatically exchange such as kg, Lb, N;
- ③. Function of free to take point;
- ④. With multi-calibration function;
- ⑤. Auto printing function;
- ⑥. Using 24-bit AD acquisition, resolution 1 / 200000;
- ⑦. Decimal digits 0 to 4 arbitrary choice;
- ⑧. Starting up using password protection feature can effectively prevent the non-operators to use

Tel: [+86-769-3365 7986](tel:+86-769-33657986)

Fax: [+86-769-3365 7987](tel:+86-769-33657987)

Website: [www.zltester.com](http://www.zltester.com)

E-mail: [Zhongli@zltester.com](mailto:Zhongli@zltester.com)

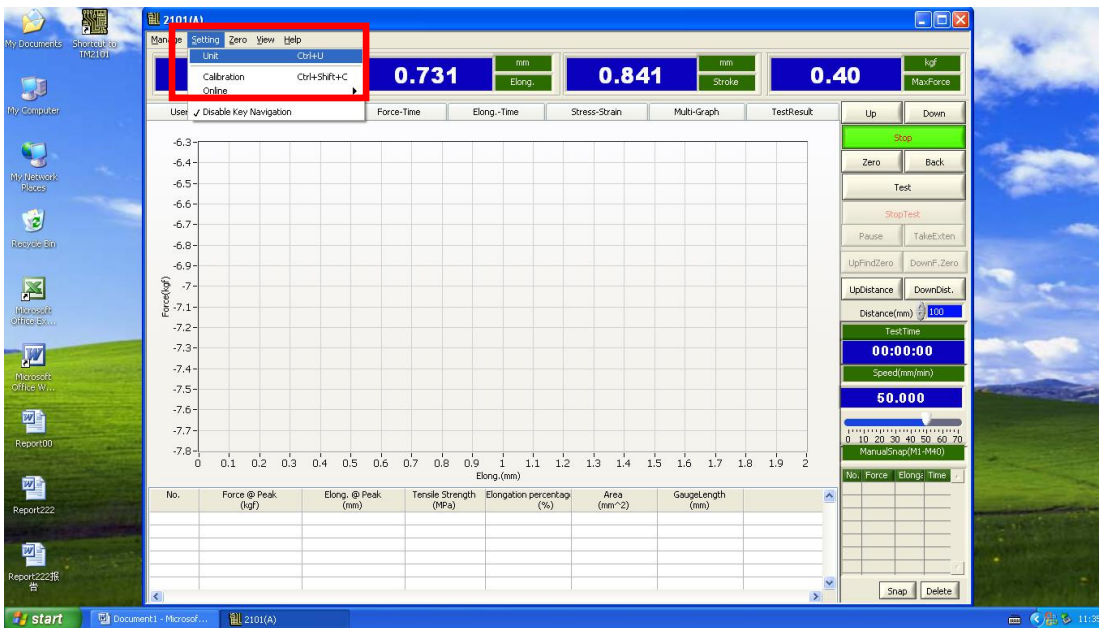
Address: [No.62, Xinhe Management of Area, Wanjiang District, Dongguan city, Guangdong province ,China](#)



- ⑨. Ratio of Breakpoint from 0 ~ 99% makes the user can set according to different materials to stop the machine
- ⑩. Overload protection function can be set, effectively preventing machine from overload;

#### 4. Computer servo control material testing machine software operation interface

1. Choose you need units, setting==>unit

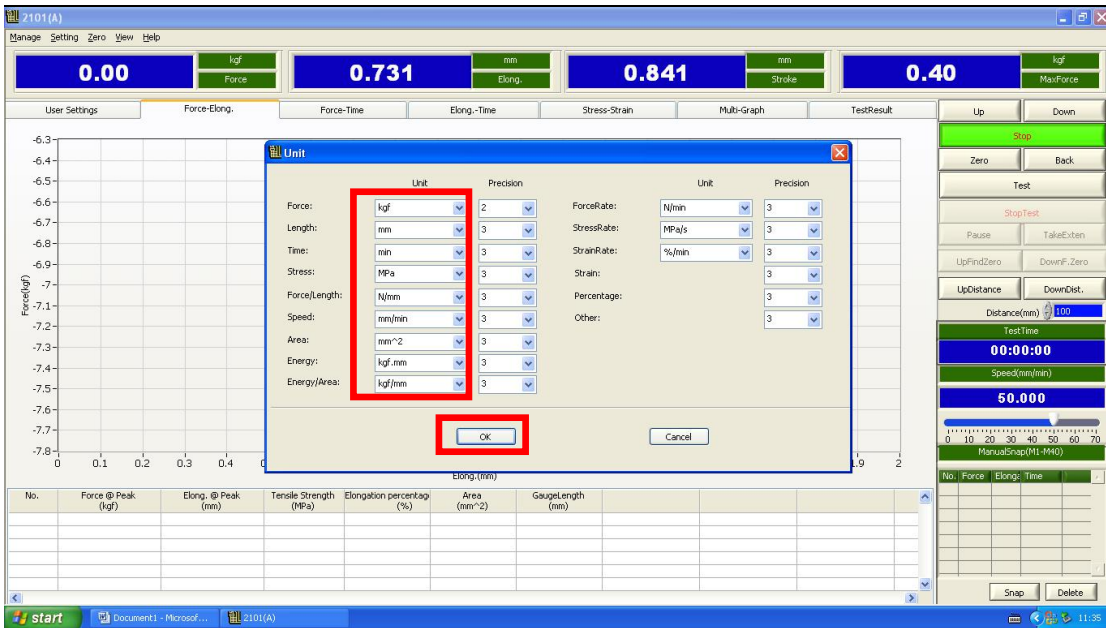


2. There are so many unit, just choose you need.

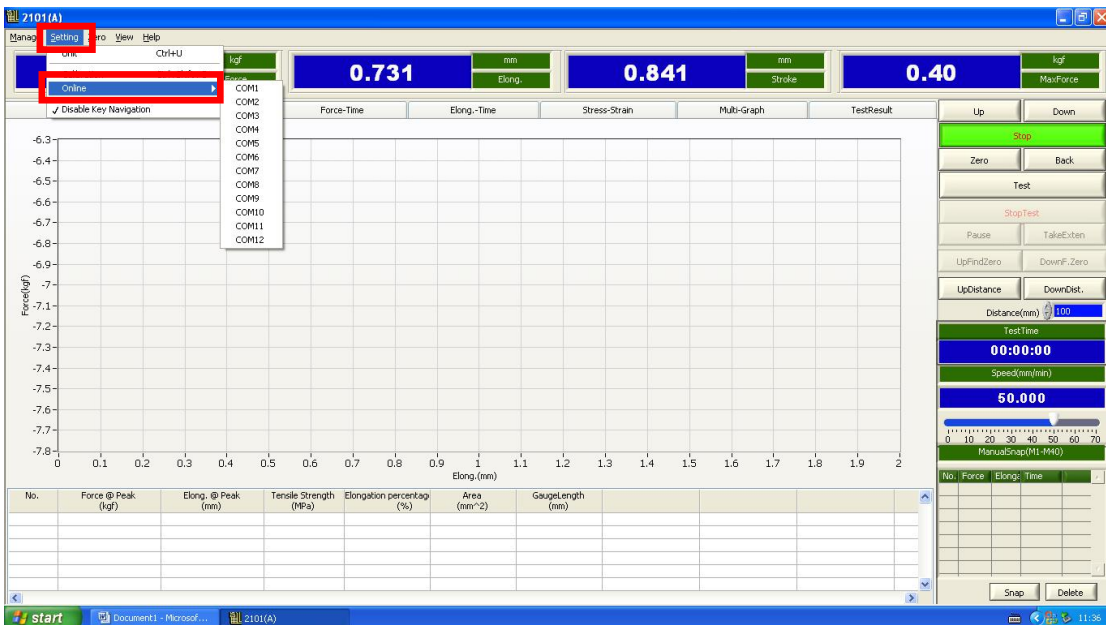


东莞中力仪器科技有限公司

ZhongLi Instrument Technology Co., Ltd.



3. Connect computer and software online. Setting==>Online==>COM1 or COM2..., after it shows success connected.



## 5. Test results

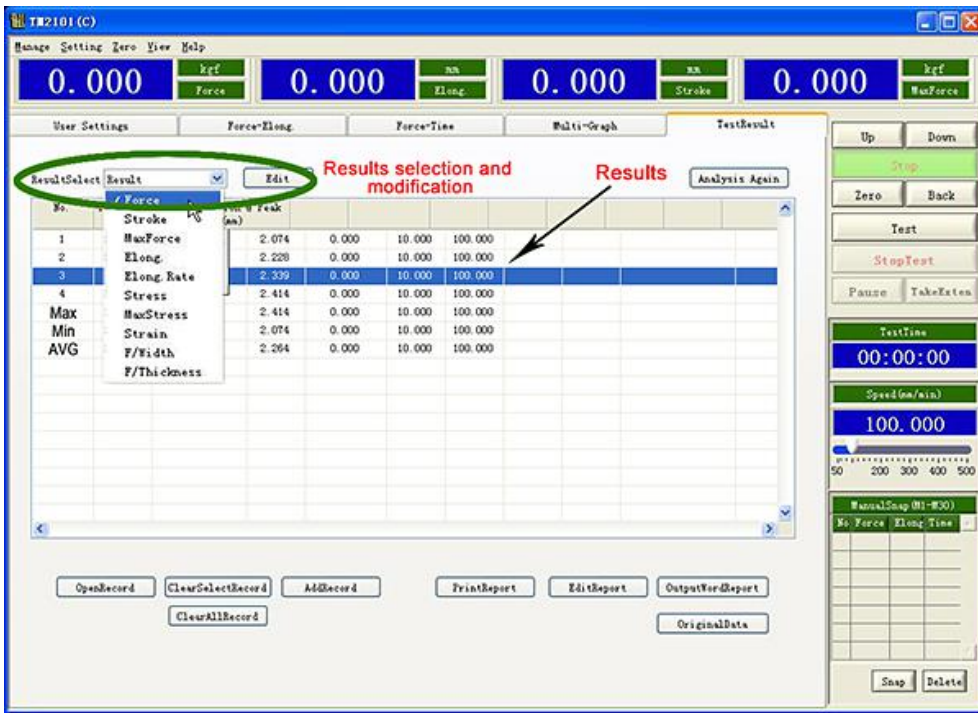
Tel: +86-769-3365 7986

Fax: +86-769-3365 7987

Website: [www.zltester.com](http://www.zltester.com)

E-mail: [Zhongli@zltester.com](mailto:Zhongli@zltester.com)

Address: No.62, Xinhe Management of Area, Wanjiang District, Dongguan city, Guangdong province ,China



6. Computer servo control material testing machine test curve



Tel: +86-769-3365 7986

Fax: +86-769-3365 7987

Website: [www.zltester.com](http://www.zltester.com)

E-mail: [Zhongli@zltester.com](mailto:Zhongli@zltester.com)

Address: No.62, Xinhe Management of Area, Wanjiang District, Dongguan city, Guangdong province ,China



Machine Picture:



The Grips

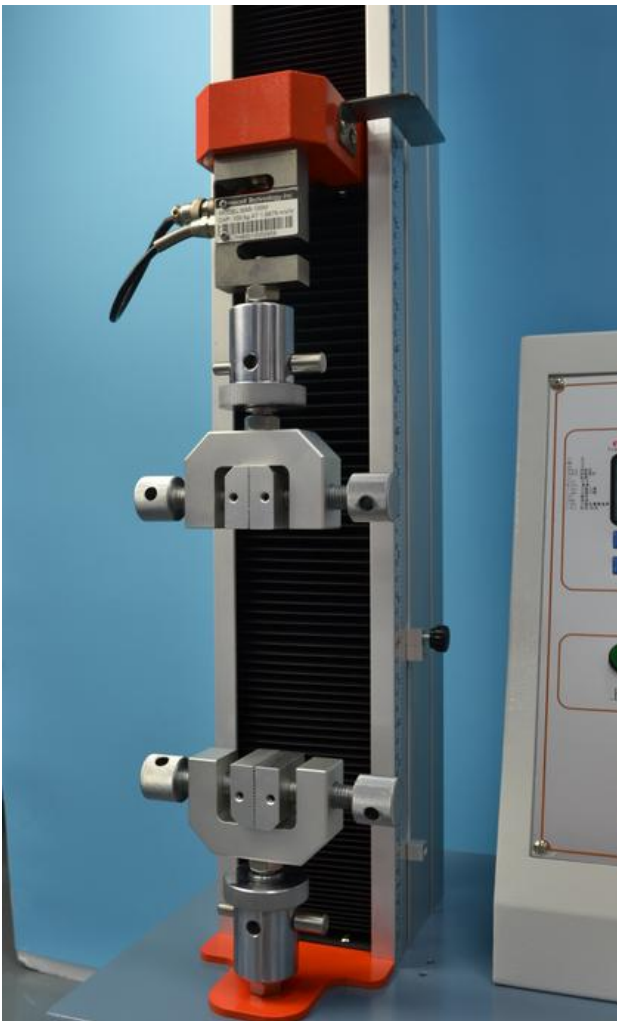


The Control Panel



东莞中力仪器科技有限公司

ZhongLi Instrument Technology Co., Ltd.



The CE certificate:

Tel: [+86-769-3365 7986](tel:+86-769-33657986)

Website: [www.zltester.com](http://www.zltester.com)

Address: [No.62, Xinhe Management of Area, Wanjiang District, Dongguan city, Guangdong province ,China](#)

Fax: [+86-769-3365 7987](tel:+86-769-33657987)

E-mail: [Zhongli@zltester.com](mailto:Zhongli@zltester.com)





东莞中力仪器科技有限公司

ZhongLi Instrument Technology Co., Ltd.

## CERTIFICATE

With EU Directive of Machinery Directive (MD 2006/42/EC)  
& Low Voltage Directive(LVD 2014/35/EU)

Certificate No.: CE-15-1102-05  
Holder: DONGGUAN ZHONGLI INSTRUMENT TECHNOLOGY  
CO.,LTD.  
Room 722, Dongyuan Mansion, No.159 QiFeng Road,  
Dongguan city,P.R.C  
Product: Computer Universal tensile testing machine  
Model(s): ZL-8001 / ZL-8002 /ZL-8003 /ZL-8004 / ZL-8005 /  
ZL-8006ABCD/ZL-8007/ZL-8008/ZL-8009/ZL-8010  
Standards: EN ISO 12100:2010,  
EN 60204-1:2006+AC:2010

Based upon the voluntary assessment of the product sample and Technical Construction File, the apparatus is deemed to meet the requirements of the above standards and EC directives.

The manufacturer has the responsibility for ensuring that all serial manufacture of the products are in compliance with the specification of the sample submitted for assessment and detailed in the technical file.



Date: 11.02.2015

Certification Body

For and on behalf of  
EUROSCENE BUSINESS SOLUTIONS CO., LTD

  
Euroscene Business Solution

The CE marking may be used if all relevant and effective EC directives are complied with.

**Euroscene Business Solution Co., Ltd.**

**7/11 Minerva Road, Park Royal, London, NW10 6HJ**

5/14

Tel: [+86-769-3365 7986](tel:+86-769-33657986)

Fax: [+86-769-3365 7987](tel:+86-769-33657987)

Website: [www.zltester.com](http://www.zltester.com)

E-mail: [Zhongli@zltester.com](mailto:Zhongli@zltester.com)

Address: [No.62, Xinhe Management of Area, Wanjiang District, Dongguan city, Guangdong province ,China](#)